

# The Burtch

2,131 sq ft



VILLAGES OF WATERFORD

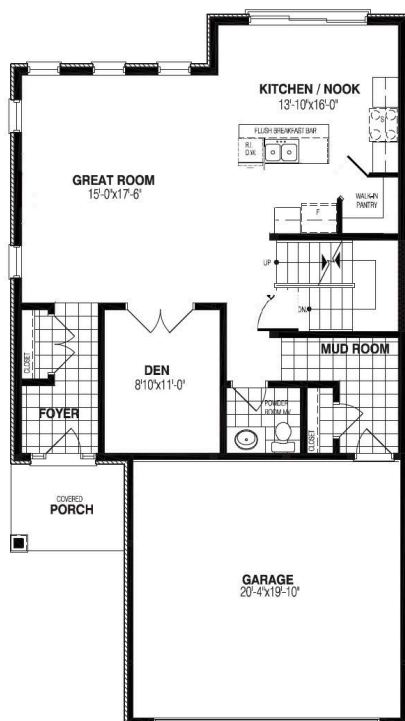


FRONT ELEVATION

- 3 bedrooms and 2.5 bathrooms
- Open concept
- Main floor den
- Attached garage
- 9' ceilings on main floor
- Engineered hardwood flooring
- 4-piece master ensuite
- Covered front porch
- Second floor laundry
- Bonus room on second floor
- Fibre optic to the home (Bell)
- Landscaping (front and back)

## MAIN FLOOR

955 sq ft



## SECOND FLOOR

1,176 sq ft



## OPTIONAL LOWER DEVELOPMENT

732 sq ft

